

COMING SOON

Photo @Bellway Homes

Rent. Save. Own.

New affordable rent to buy homes Old Royal Chace, The Ridgeway, Enfield

A selection of 19 new one and two bedroom apartments with rents starting at £1,120pcm.

Dream of getting on the housing ladder in Enfield but can't save for a deposit? Rentplus may have the answer.

Move in with £0 deposit, pay affordable rent for 5-20 years and when you buy, we'll gift you 10% towards your deposit.

We offer you a generous

10%

gifted deposit when the time comes to purchase your home.

**1 & 2 bedroom
apartments**

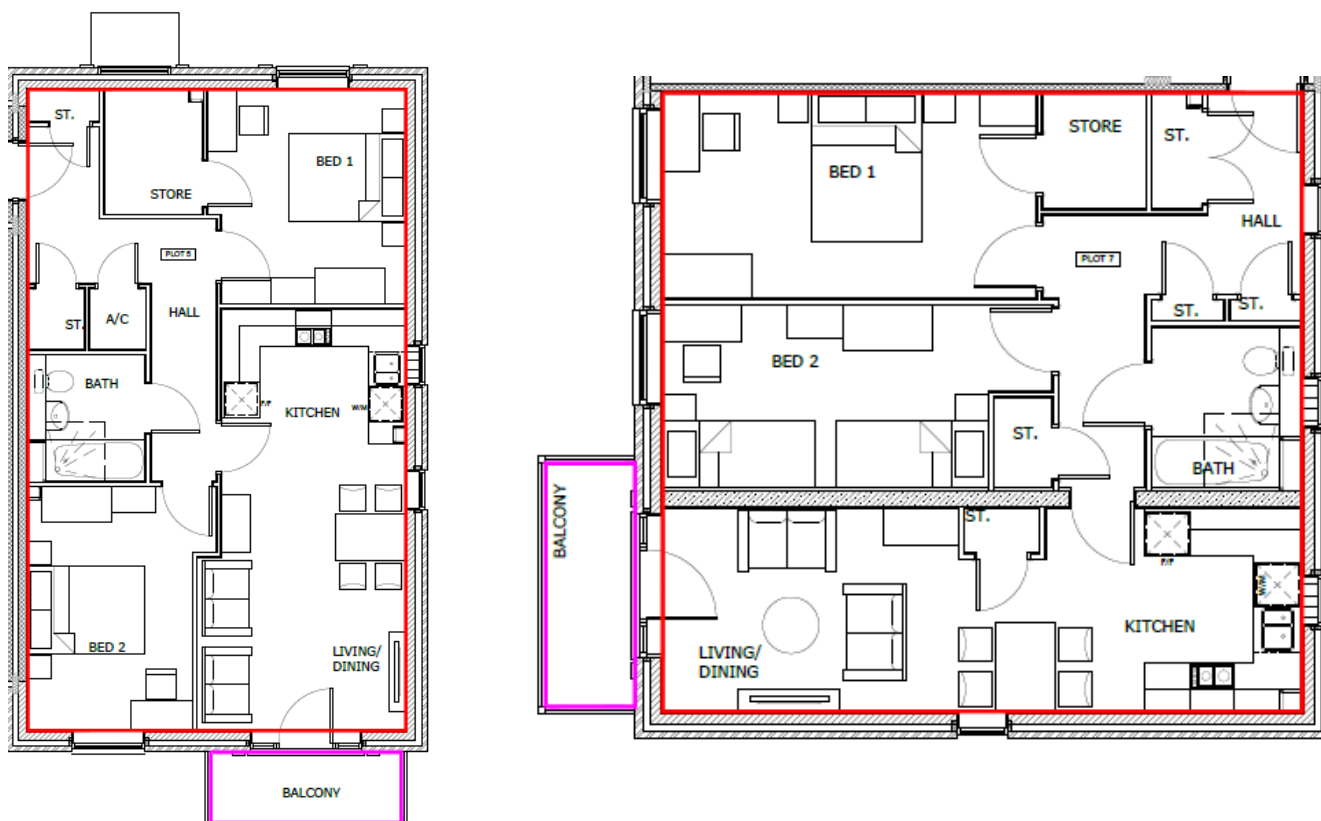
Photos for illustrative purposes only
@Bellway Homes



[illegible]

A satellite map of the Enfield area in London. The map shows a mix of green spaces, including Trent Park, World's End, and Grovelands Park, and built-up areas. A red location pin is placed in the upper left quadrant, near Trent Park and World's End. Labels on the map include 'Trent Park', 'WORLD'S END', 'Enfield', 'ENFIELD WASH', 'PONDERS END', 'EDMONTON', 'Grovelands Park', and 'Scout Ad Gil'. A yellow dashed line runs vertically through the right side of the map.

typical 2-bedroom apartments





Petworth Court



How do applicants apply?



Applicants must be in employment, education or training and have aspirations to buy their own home within a 5, 10, 15 or 20 year period.



A financial assessment will be carried out to find the best purchase plan to suit you. You have the opportunity to rent your home for 5, 10, 15 or 20 years before you buy.



You'll be advised if you meet the criteria. We will be able to answer any questions you have and we will help you make a formal application through Enfield Council.

Rentplus offers an opportunity for tenants to build up their credit history for a minimum of five years so that they have a better opportunity to get a mortgage. Affordable rent to buy is not Shared Ownership. When you purchase your Rentplus home you will be buying 100% of your property.

Register on the Enfield Home Choice Portal at enfield.homeconnections.org.uk or email info@ghha.co.uk.

You will be sent full details on each property, information about viewings, and how to formally apply for a Rentplus home.

For more information visit www.rentplus-uk.com

